

Lana Gordon, Secretary

Sam Brownback, Governor

FOR IMMEDIATE RELEASE

March 20, 2015

FOR MORE INFORMATION, CONTACT:

Barbara Hersh

785-296-0901

Barbara.Hersh@dol.ks.gov

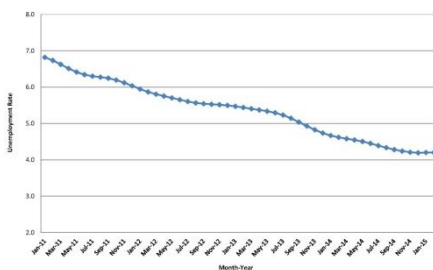
Jobs Report February 2015

TOPEKA, Kan. – The state’s February seasonally adjusted unemployment rate was 4.2 percent, unchanged from January and down from 4.6 percent in February 2014.

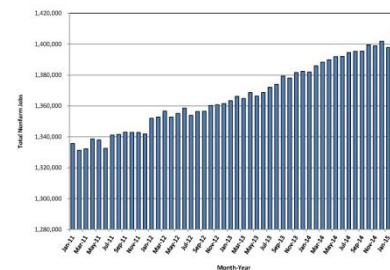
Seasonally adjusted figures show Kansas gained 21,000 private sector jobs since last year, or 1.9 percent. Kansas nonfarm jobs increased by 21,200 jobs, a 1.5 percent increase since February 2014. Since last month, Kansas added 9,000 seasonally adjusted private sector jobs, or 0.8 percent. The state gained 9,500 seasonally adjusted total nonfarm jobs, a 0.7 percent increase since last month.

“Private sector jobs continue to drive Kansas’ economic growth, setting a new record high this month,” said Lana Gordon, Secretary of Labor.

**Unemployment Rate (Seasonally Adjusted)
Kansas
January 2011 to February 2015**



**Private Sector Jobs (Seasonally Adjusted)
Kansas
January 2011 to February 2015**



Not seasonally adjusted figures show Kansas gained 20,400 private sector jobs since last year, or 1.8 percent. Kansas nonfarm jobs increased by 20,600 jobs, a 1.5 percent increase since February 2014. Since January, private sector jobs increased by 6,100, or 0.5 percent. The state gained 14,600 total nonfarm jobs over the month, a 1.1 percent increase.

“Demand for labor in the state continued to improve in February, with the number of private sector jobs increasing by 20,400, or 1.8 percent, over the past 12 months,” said Tyler Tenbrink, Senior Labor Economist. “The number of average hours worked in a week increased at a modest rate of 0.6 percent.”

The not seasonally adjusted unemployment rate in February was 4.5 percent, down from 4.6 percent in January and down from 5.2 percent one year ago.

There were 13,070 initial claims for unemployment benefits in February 2015, down from 17,894 in January and up from 11,121 in February 2014. There were 97,413 continued claims in February, down from 103,232 the previous month and down from 100,071 in February 2014. These numbers include all available programs.

Kansas labor market information for February is available [here](#).

Data provided is preliminary and subject to monthly revisions and annual benchmarks by the Bureau of Labor Statistics. Information on procedures for producing Local Area Unemployment Statistics (LAUS) estimates is available on the BLS website [here](#) and procedures for producing Current Employment Statistics (CES) estimates is available on the BLS website [here](#).

PLEASE NOTE: The March 2015 Labor Report will be released on Friday, April 17.

Audio clips of the Labor Market Report quotes by Lana Gordon, Secretary of Labor and Tyler Tenbrink, Senior Labor Economist are available online courtesy of the Kansas Department of Labor.

###

KDOL serves Kansas workers and businesses by providing fair and efficient administration of state labor laws.

Follow the Kansas Department of Labor:

